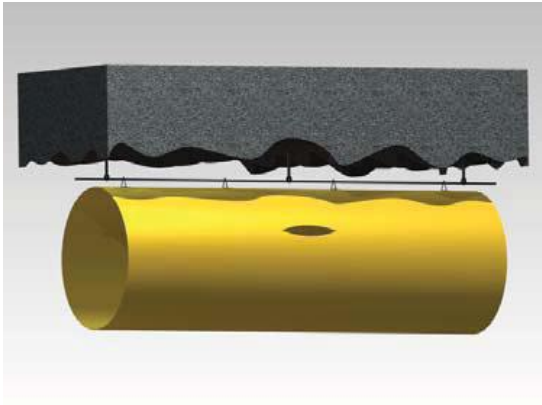


## Jensen Ventilation Repair Sleeve

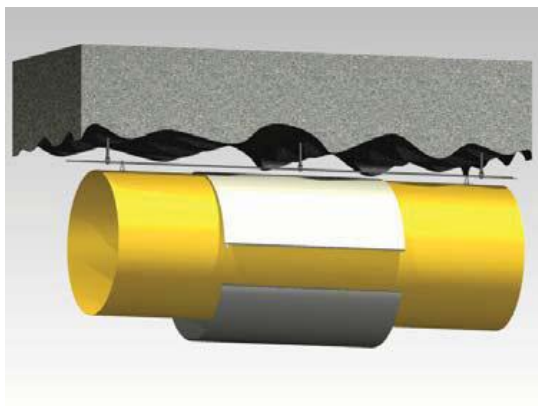
The repair sleeve is a fast and secure tool for repairing holes and tears of flexible ducting. The sleeve is made from standard duct material and a longitudinal zipper is attached for closing the sleeve. The sleeve is made approx. 0.5% smaller than the nominal duct diameter which will allow the sleeve to be really tight against the duct once the duct is pressurized. With the repair sleeve, the repair will be professionally done and the leakage from any hole will be reduced to a minimum. The repair sleeves are manufactured in standard lengths 1.0, 2.0, 3.0 and 5.0 m. Other lengths will be manufactured upon request.



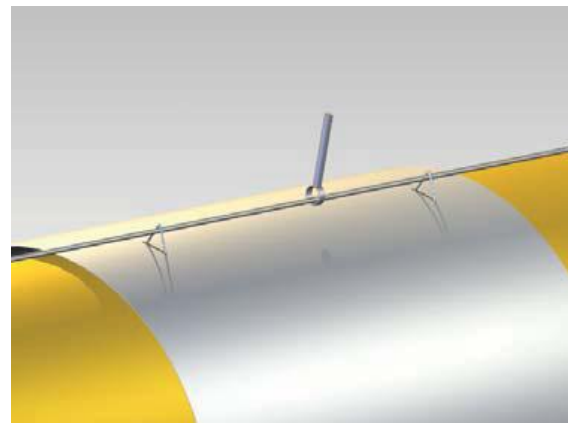
Determine the length of the hole. The repair sleeve should cover the hole with at least 0,5 meters margin.



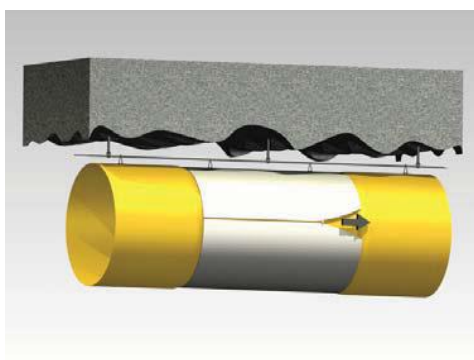
Remove the suspension hooks which will be covered by the repair sleeve.



Wrap the repair sleeve over the duct. Make sure the hole is well covered by the sleeve and the zipper is at least 0,5 meter away from the hole.



Hook the hooks from the repair sleeve onto the suspension cable.



Close the zipper and the repair is finished.